

Plate 2: 1–4. *Cucullia scopariae*; 5. *Cucullia scoparioides*; 6–7. *Cucullia fraudatrix*; 8–10. *Cucullia resecta*; 11–13. *Cucullia formosa*; 14–15. *Cucullia fuchsiana*; 16–17. *Cucullia absinthii*; 18–19. *Cucullia hemidiaphana*; 20–21. *Cucullia tesorum*; 22. *Cucullia spectabilisoides*; 23–25. *Cucullia argentea* from Europe; 26–27. *Cucullia argentea* from Mongolia; 28–30. *Cucullia jankowskii*; 31–34. *Cucullia cineracea cineracea*; 35–36. *Cucullia cineracea cyanogrisea*.

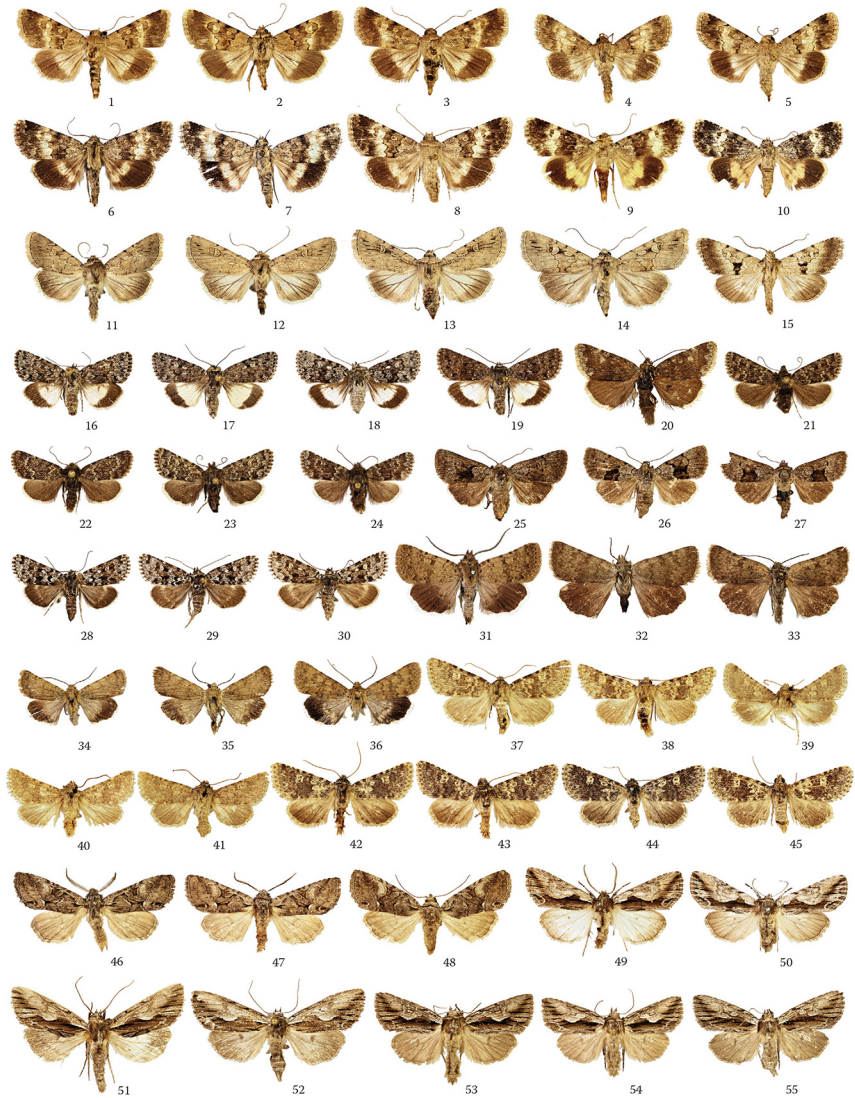


Plate 13: 1–3. *Oncocnemis mongolica*; 4–5. *O. beri* paratypes; 6. *O. mixtazona* paratype; 7. *O. mixtazona* ssp. from East Pamir; 8. *O. talantasemovi* paratype; 9–10. *O. thomasi* (9. Holotype; 10. Paratype); 11–14. *O. strioligera*; 15. *O. x-scripta*; 16–19. *Sympistis heliophila*; 20. *S. nigrita nigrita*; 21–24. *S. nigrita zetterstedti*; 25–27. *S. funebris*; 28–30. *S. lapponica*; 31–33. *Sympistoides grumi*; 34–35. *Sympistoides alpha* paratypes; 36. *S. beta* paratype; 37–38. *Bryomima carducha rosea*; 39–41. *B. hakkariensis* (39. Holotype; 40–41. Paratypes); 42–45. *B. defreina* paratypes; 46–48. *Pougeteris draesekei*; 49–50. *Callieris ramosa*; 51–55. *C. ramosula*.

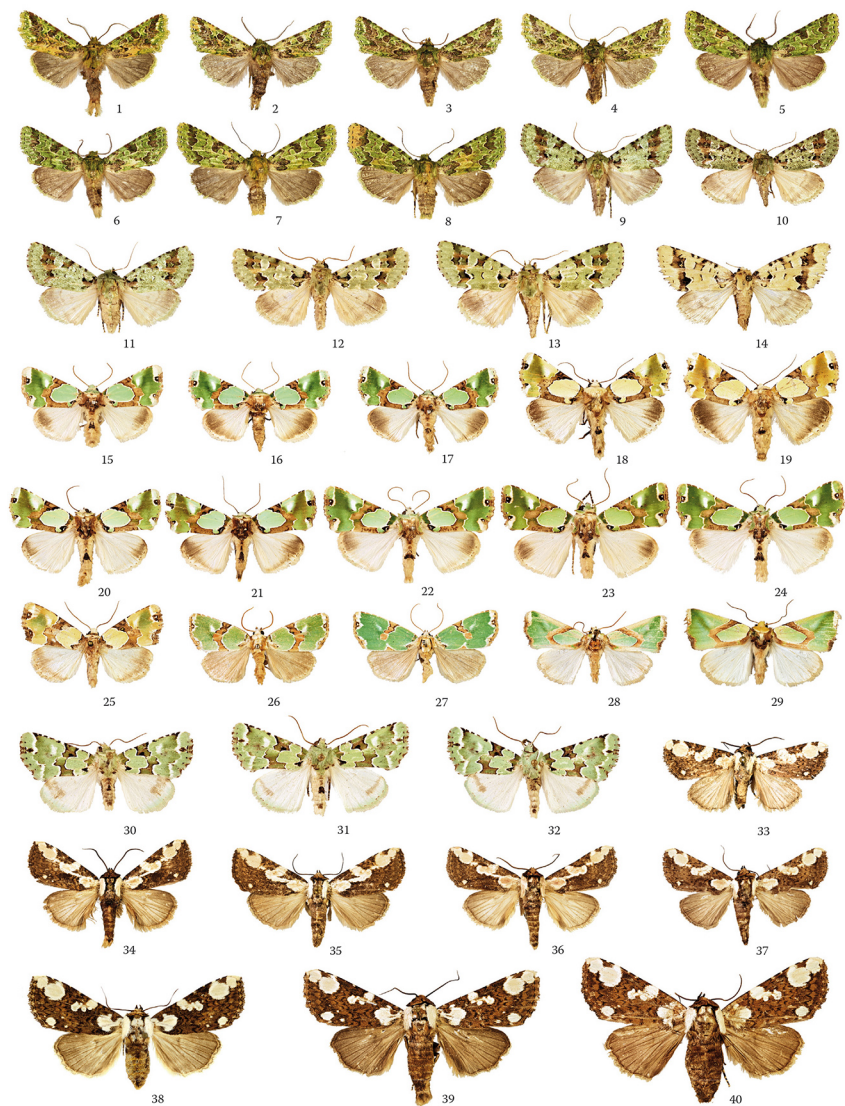


Plate 26: 1–4. *Vigintinome nepalichlora*; 5–8. *Vigintinome autumnalis*; 9–11. *Discibosome discibrunea*; 12–13. *Discibosome pulchra*; 14. *Discibosome marmorea*; 15–17. *Nacna malachitis*; 18–19. *Nacna splendens splendens*; 20–21. *Nacna splendens javensis*; 22–24. *Nacna buschmannferenczi* paratypes; 25. *Nacna smaragdina*; 26–27. *Nacna sugitani*; 28–29. *Nacna pulchripicta*; 30–32. *Nacna prasinaria*; 33. *Mudaria arnaudmaederi* holotype; 34–37. *Mudaria helenetrudelae* (34. Holotype; 35–37. Paratypes); 38. *Mudaria major*; 39–40. *Mudaria batesoni*.

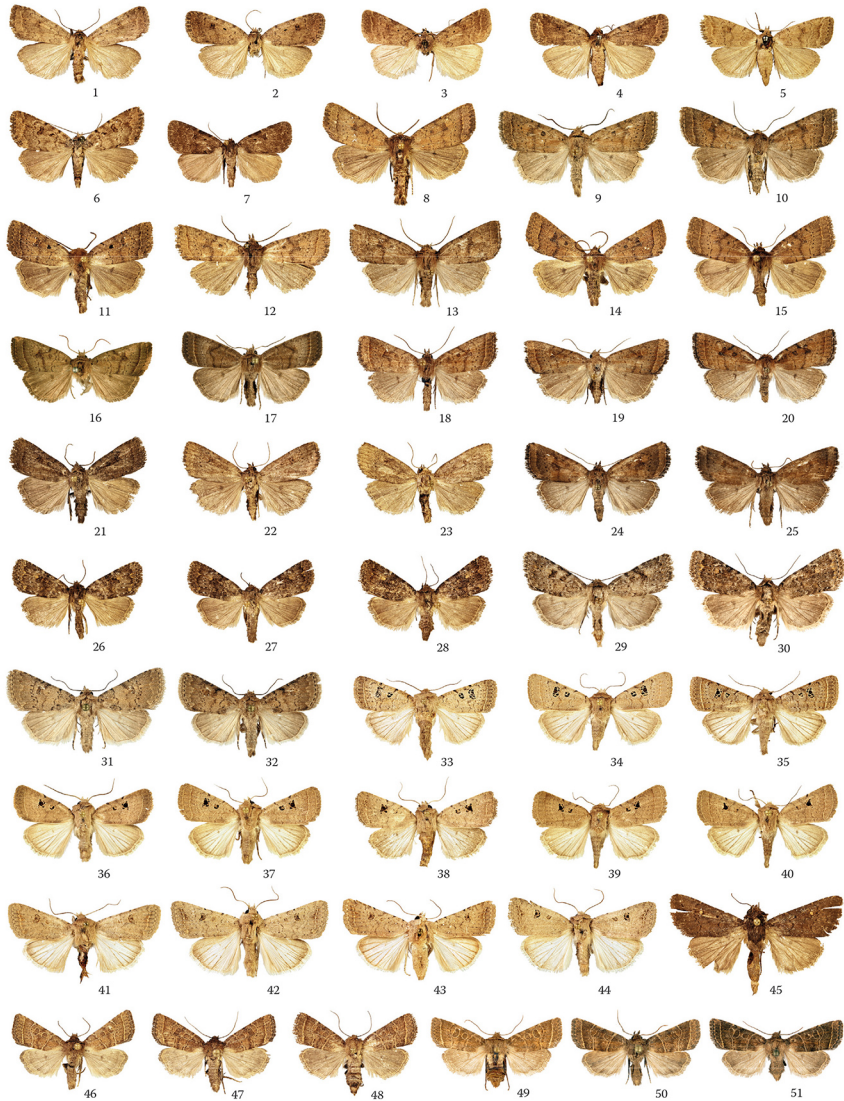


Plate 71: 1–5. *Aethis gluteosa gluteosa*; 6. *A. cristifera*; 7. *A. funesta centralasiatica* paratype; 8–10. *A. naciriae* (8. Holotype, in MHNG; 9–10. Paratypes, in NHMW); 11–15. *A. silvonenii* (11. Holotype; 12–15. Paratypes); 16–17. *A. stygia stygia* (16. Holotype, in NHMUK); 18–20. *A. stygia nepalica* paratypes; 21–23. *A. katonagergelyi katonagergelyi* (21. Holotype; 22–23. Paratypes); 24–25. *A. katonagergelyi pakistana* paratypes; 26–28. *A. junnilainenii* (26. Holotype; 27–28. Paratypes); 29–30. *A. szekeleyventei* paratypes; 31–32. *A. hilbrandi* paratypes; 33–35. *A. delecta*; 36–40. *A. tothbalazsi* (36. Holotype; 37–40. Paratypes); 41–44. *A. farinacea*; 45. *A. ochreipuncta*; 46–49. *A. divisa divisa*; 50–51. *A. divisa ayubia* (50. Holotype; 51. Paratype, both in NHMW).

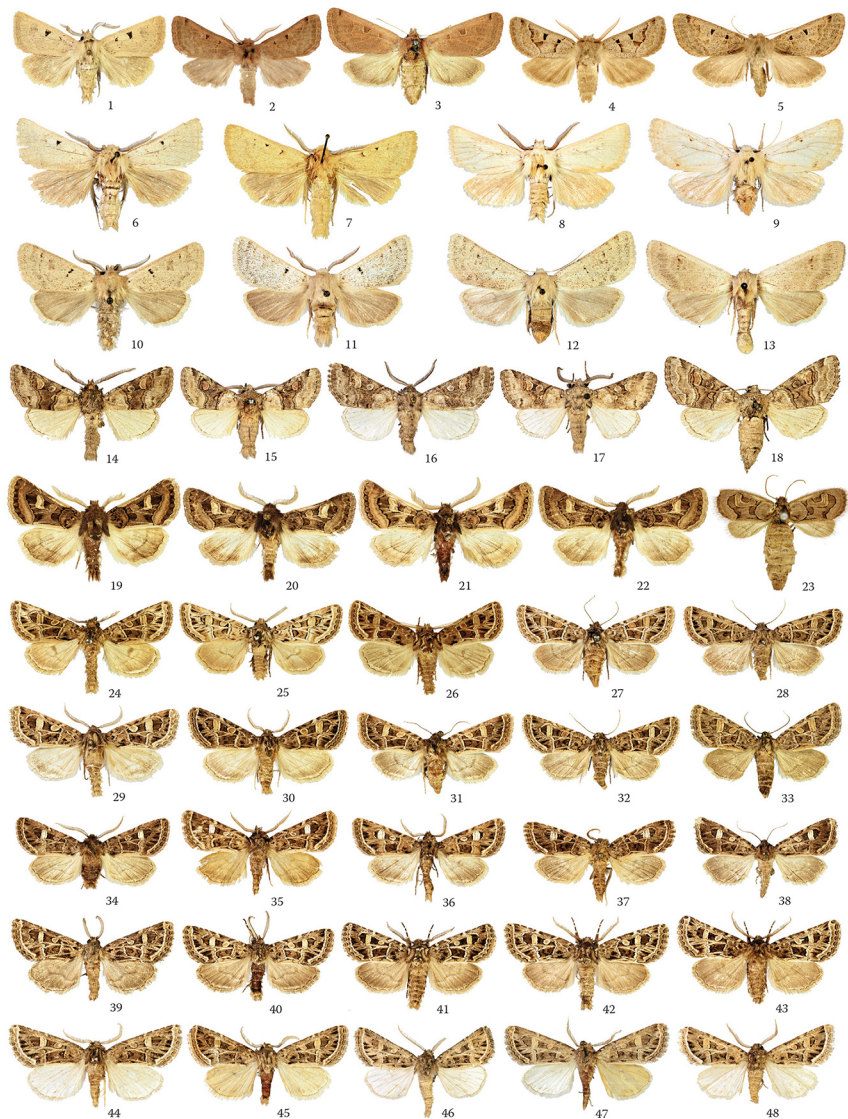
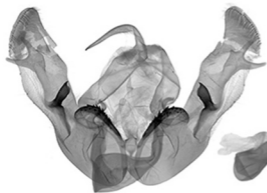
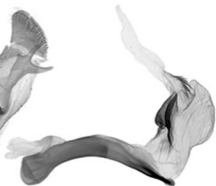


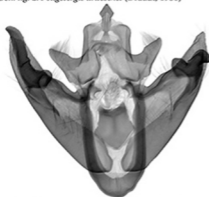
Plate 120: 1–5. *Episema tersa*; 6–9. *Episema lemoniopsis*; 10–13. *Episema korsakovi*; 14–18. *Cleoceris scoriacea*; 19–23. *Lorrainlandryia scillae* (23. Paratype, in MHNP); 24–28. *Leucochlaena oditis-hispida* complex from France; 29–33. *Leucochlaena oditis-hispida* complex from Spain; 34–38. *Episema jeanfaxairei* (34. Holotype; 35–38. Paratypes); 39–43. *Leucochlaena turatii*; 44–48. *Episema caillezi* (44. Holotype; 45–48. Paratypes).

Gen. fig. 1. *Pougetergis draesekei* (Draudt, 1950)

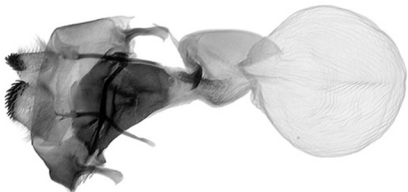
OP8703m, China, Yunnan

Gen. fig. 2. *Pougetergis draesekei* (Draudt, 1950)

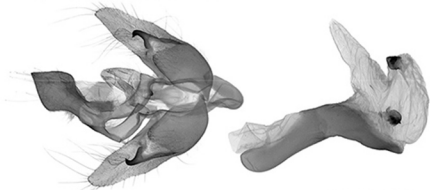
OP8704f, China, Yunnan

Gen. fig. 3. *Cosmia camptostigma* (Ménétries, 1859)

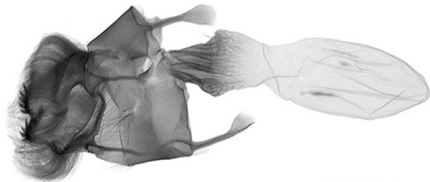
OP8955m, Russian Far East

Gen. fig. 4. *Cosmia camptostigma* (Ménétries, 1859)

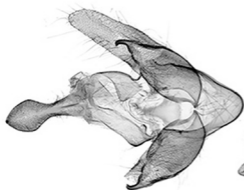
OP8958f, Japan

Gen. fig. 5. *Cosmia moderata* (Staudinger, 1888)

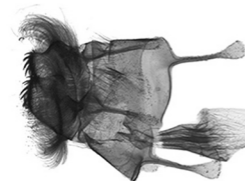
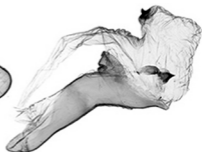
OP6971m, Russian Far East

Gen. fig. 6. *Cosmia moderata* (Staudinger, 1888)

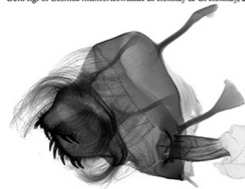
OP6973f, Russian Far East

Gen. fig. 7. *Cosmia mamoruowadai* L. Ronkay & G. Ronkay, 2023

RL13357m Paratype, Taiwan, Nantou County

Gen. fig. 8. *Cosmia mamoruowadai* L. Ronkay & G. Ronkay, 2023

RL13356f Holotype, Taiwan, Taitung County

Gen. fig. 9. *Cosmia sanguinea* Sugi, 1955

OP8691f, Japan

